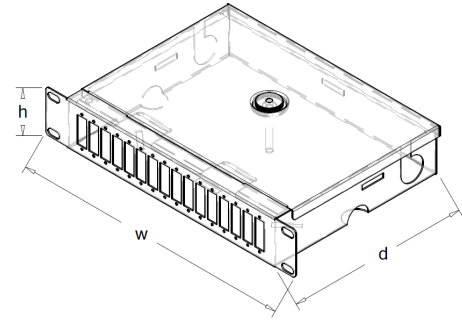


Fixed Optical Fiber Switch board

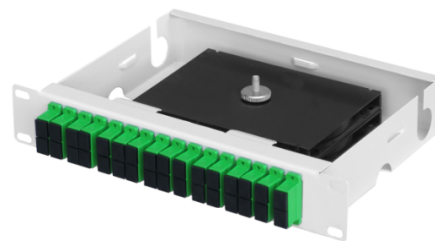
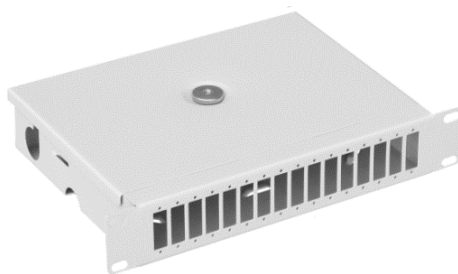
DESCRIPTION:

- Designed for mounting in 19" and 10" cabinets,
- Made of 1 mm thick steel sheet,
- The 10" switch has a commutation field for 16 SC DX adapters,
- It has ribs that allow the installation of clamps ordering fiber optic fibers,
- The distribution board has the possibility to insert cables from the rear, has 4 holes (2 open and 2 closed) for PG 13.5 included in the set,
- Possibility to mount fiber-optic splice trays.
- 19" switch boards are available in two versions: SC SX and SC DX (for 12 or 24 holes SC adapters)



distribution board

Symbol	internal dimensions (mm)		
	height	width	depth
PS 10" 1U 16xDX st	1U	10"	166
PS 19" 1U 12xSX st	1U	19"	212
PS 19" 1U 12xDX st	1U	19"	212
PS 19" 1U 24xSX st	1U	19"	212
PS 19" 1U 24xDX st	1U	19"	212
PS 19" 2U 48xDX st	2U	19"	212



PS 10" 1U 16xDX st



PS 19" 24xDX st