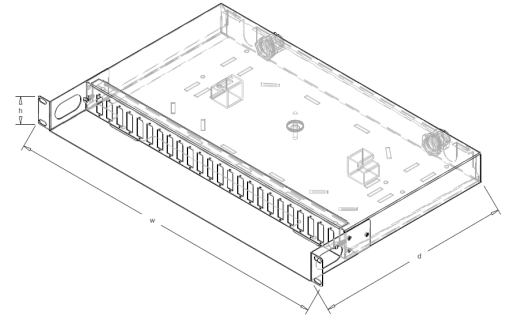


## **Fiber-Optic distribution board (without guides) 48J**

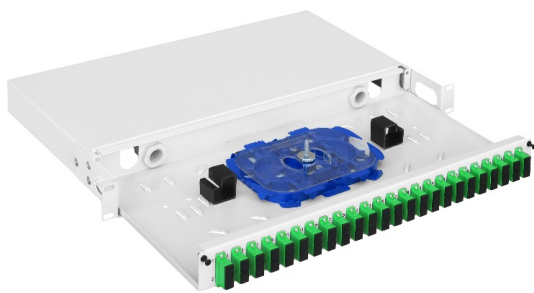
**DESCRIPTION:**

Designed for mounting in 19" cabinets.

- Possibility to mount fiber-optic splice trays,
- Possibility of introducing linear cables from the rear, the distributor has 4 holes (2 open and 2 closed) for PG 13.5 chokes, included in the kit,
- Made of 1 mm thick steel sheet,
- Equipped with a removable drawer for convenient access to the interior,
- It has self-adhesive handles and ribs enabling the assembly of cable ties for easy organization of cables.



Symbol	internal dimensions (mm)		
	height	width	depth
<b>PS 19" 1U 24xDX W bp</b>	1U	19"	289,5



**PS 19" 1U 24xDX W bp**



distribution board