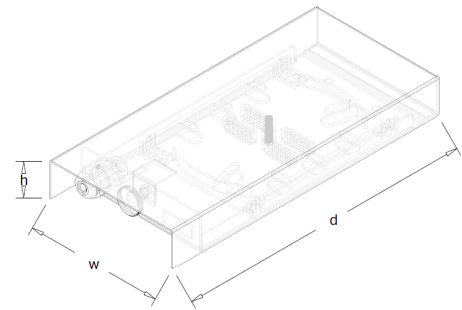


## Wall mounted Fiber-Optic Switch

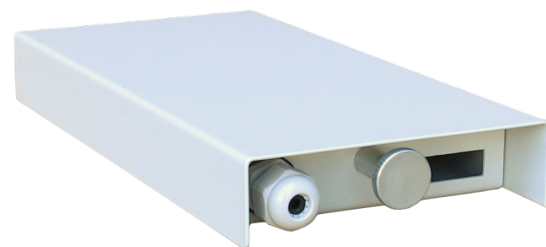
### DESCRIPTION:

Switchboard dedicated for mounting at the subscriber as an access point.

- Designed for wall mounting as a finishing element of a fiber-optic network,
- Closed with a knurled screw,
- Dedicated space for the welding tray up to 12 splices,
- Possibility to use one SC DX adapter,
- The set has a PG-9 cable gland for 4-8mm cable,
- Material: body sheet metal 1.50mm thick / cover 1.00mm thick.



Symbol	external dimmensions (mm)		
	height	width	depth
<b>PSN-A</b>	31,5	111	241



**PSN - A**



indoor