

M 42/48/16 Cabinet - 72J

DESCRIPTION:

Cabinet designed for wall mounting in places particularly vulnerable to devastation and burglary.

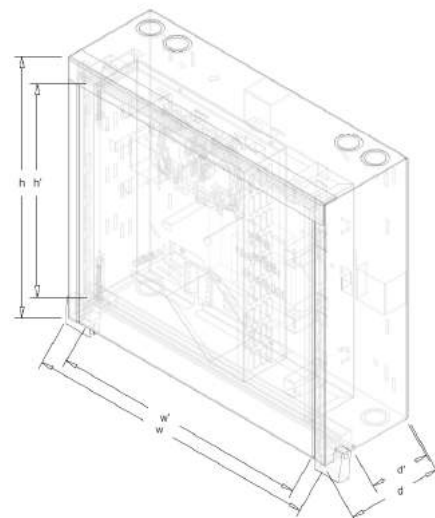
- It enables the termination of cables reaching the building from the telecommunications center, vertical cables and the assembly of optical splitters,

- In the cabinet there is a fiber optic switch with a 72J switching box (36 holes, S.C., DX), two screws for mounting fiber optic trays and holders for the organization of fiber optic fibers. It is tilting and unmountable,

- Organizational handles for easy cable storage (at the back, under the distribution box),

The cabinet has 2 holes in the corners from above and one at the bottom (Ø38 / 29 - plugged),

- Closing with 2 padlocks T-13 Barrel with 8 mm diameter shank.



indoor

| Symbol | External dimensions (mm) | | | Internal dimensions (mm) | | |
|-----------------------------|--------------------------|-----------|-----------|--------------------------|------------|------------|
| | height (h) | width (w) | depth (d) | height (h') | width (w') | depth (d') |
| M-42/48/16 ST 36x Dx | 422 | 480 | 157 | 355 | 421 | 102 |



M 42/48/16 ST - DX 72J

