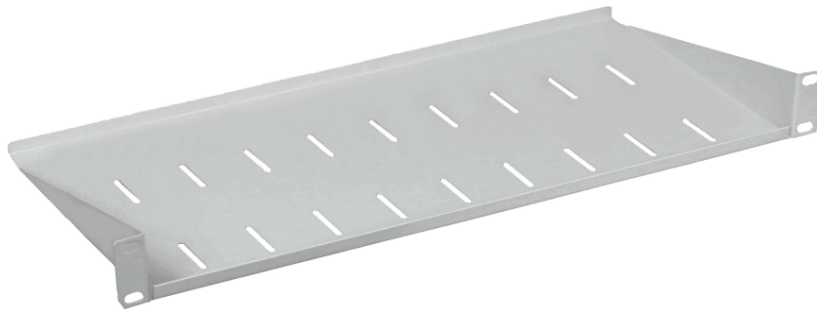


## 10" and 19" shelves

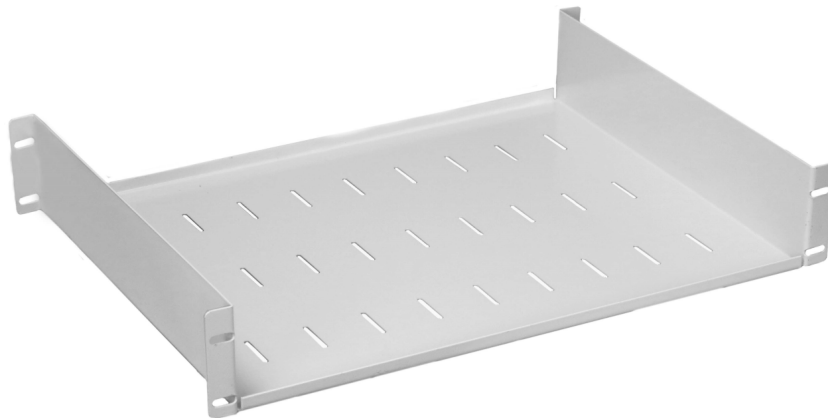
DESCRIPTION:

- Suitable for mounting in 10 "and 19" cabinets,
- They have holes for fixing devices with cable ties,
- Material: steel sheet thickness 1.5mm.

Symbol	external dimensions (mm)		
	height	width	depth
<b>Półka Rack 10" 1U gł. 150</b>	1U	10"	150
<b>Półka Rack 19" 1U gł. 260</b>	1U	19"	260
<b>Półka Rack 19" 1U gł. 340</b>	1U	19"	340



**Półka 19" 1U 260mm**



**Półka 19" 1U 340mm**