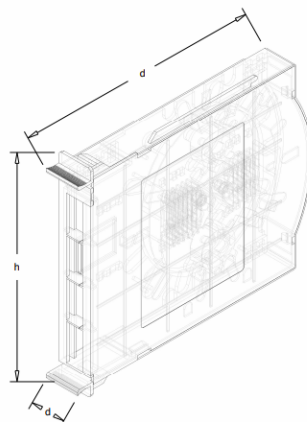


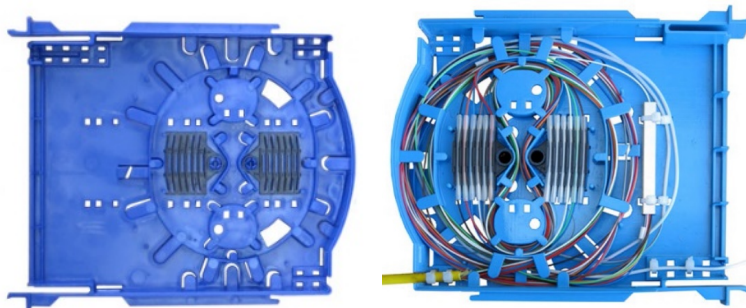
## 12J SX Modul

**DESCRIPTION:**

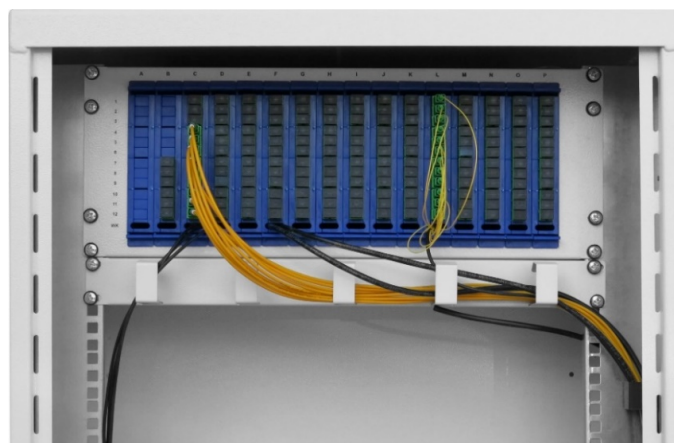
- Designed for placing and securing casings for optical fiber splices - 24 pieces
- Switching field for 12 SC SX adapters,
- Module equipped with holes for mounting tubes and splitter on cable ties,
- Protection of free places for adapters is provided by blanking plates,
- Fastening in the switchboard with latches,
- Universal splices tray made of plastic. (ABS)



Symbol	external dimensions (mm)		
	height	width	depth
<b>Kasetka (moduł) 12 x SC*</b>	155	182,5	24,5



**Moduł 12J**



**16 modułów 12J w PS 19" 4U z modułami w szafie M-58/58/30**

accessories